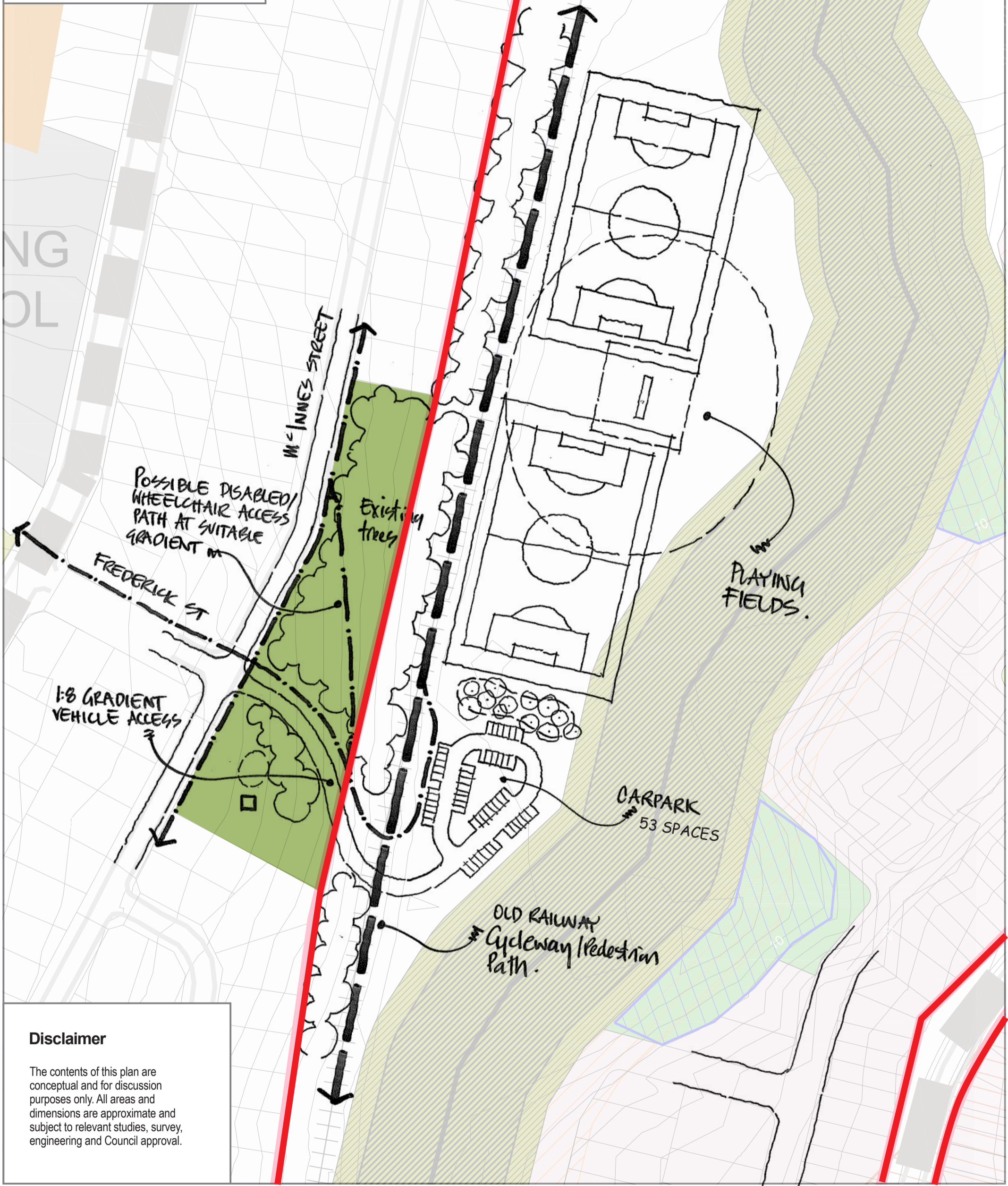


Legend

- Existing NCC Reserve
- Coal and Allied Site Boundary



Disclaimer

The contents of this plan are conceptual and for discussion purposes only. All areas and dimensions are approximate and subject to relevant studies, survey, engineering and Council approval.



Minmi Sport's Fields Western Access Concept Plan



PRELIMINARY FOR DISCUSSION PURPOSES ONLY

Scale 1:1500@A3 | Date January 2012 | Project No 24311_47A

RPS

RPS Australia East Pty Ltd
ACN 140 292 762
ABN 44 140 292 762
Suite 18 / 455 Brunswick St
PO Box 1559
Fortitude Valley QLD 4006
T +61 7 3124 9300
F +61 7 3124 9399
W rpsgroup.com.au

© COPYRIGHT PROTECTS THIS PLAN
Unauthorised reproduction or amendment
not permitted. Please contact the author.