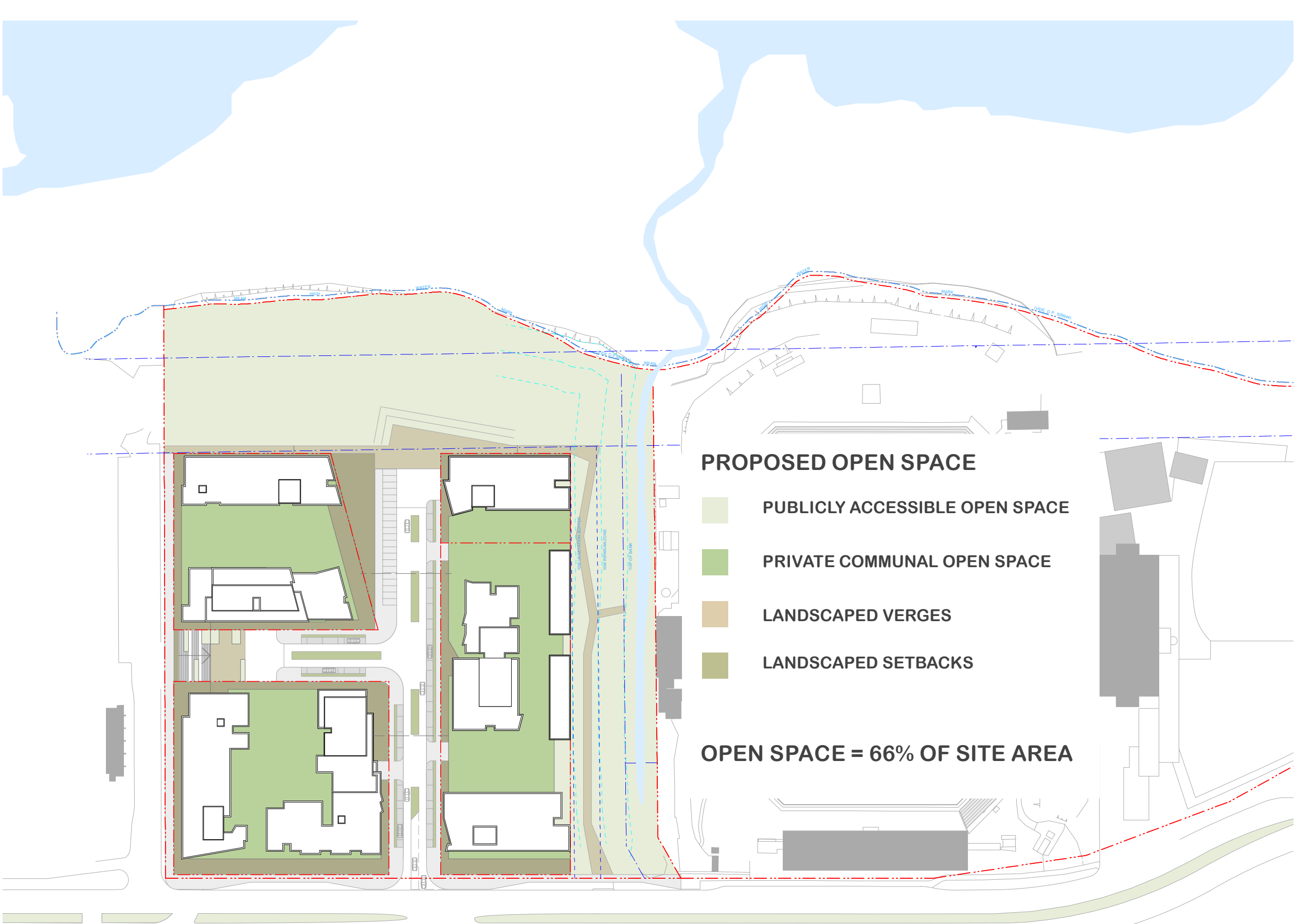
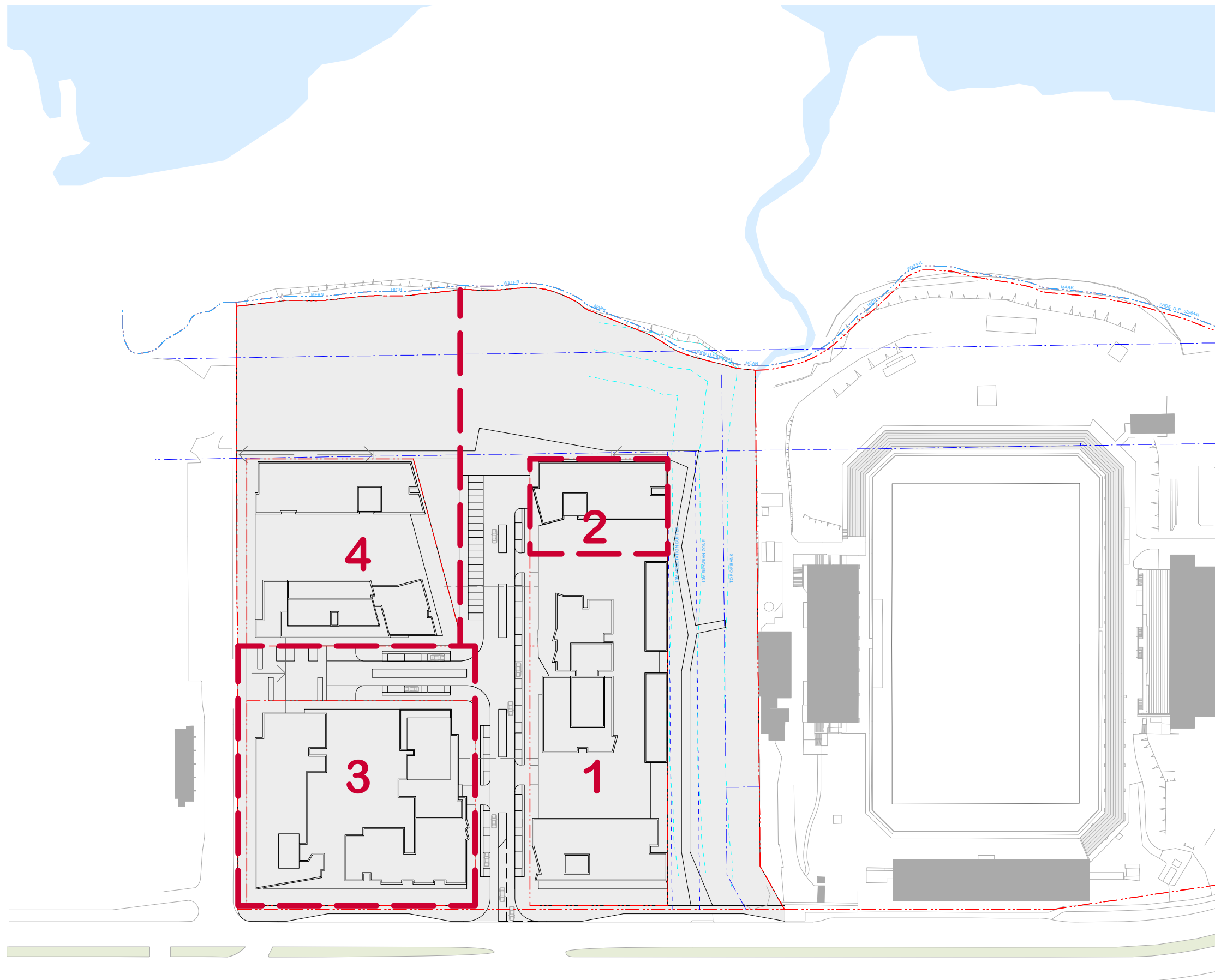


NOTES
THIS DRAWING IS THE COPYRIGHT © OF TURNER + ASSOCIATES ARCHITECTS. NO REPRODUCTION WITHOUT PERMISSION. UNLESS NOTED OTHERWISE THIS DRAWING IS NOT FOR CONSTRUCTION. ALL DIMENSIONS AND LEVELS ARE TO BE CHECKED ON SITE PRIOR TO THE COMMENCEMENT OF WORK. IF ANY TURNER + ASSOCIATES OF ANY DISCREPANCIES FOR CLARIFICATION BEFORE PROCEEDING WITH WORK. DRAWINGS ARE NOT TO BE SCALED. USE ONLY FIGURED DIMENSIONS. REFER TO CONSULTANT DOCUMENTATION FOR FURTHER INFORMATION.
Turner + Associates Architects: 6855
ABN 55 954 954 911
DL23 Quality Endorsed Company ISO 9001:2015
Licence Number: 6195

KEY PLAN

LEGEND



PROPOSED OPEN SPACE

- PUBLICLY ACCESSIBLE OPEN SPACE
- PRIVATE COMMUNAL OPEN SPACE
- LANDSCAPED VERGES
- LANDSCAPED SETBACKS

OPEN SPACE = 66% OF SITE AREA

G	6/3/12	ANM	Preferred Project Report
F	7/9/11	ANM	Test of Adequacy Table response
Rev.	Date	Approved by	Revision Notes

CLIENT

BLUESTONE CAPITAL VENTURES No. 1 Pty Ltd

PROJECT TITLE

CRONULLA SHARKS REDEVELOPMENT
RESIDENTIAL COMPONENT

DRAWING TITLE

Staging & Open Space Diagram

SCALE:
1:1500
@A1, 50%@A3

JOB No. 10058

DRAWN

STATUS
FOR REVIEW

DWG No. A002

REV G

NORTH

TURNER + ASSOCIATES
L1 410 Crown Street Surry Hills NSW 2010 Australia
t +61 2 8668 0000 f +61 2 8668 0088