



All apartments are duplex
Refer to Level 1 for Amenity Analysis Summary

ARC AMENITY ANALYSIS GROUND LEVEL



Enjoyment of Views
Refer to RFDC page 50



Enjoyment of Sunlight
Refer to RFDC page 85
Living room and private open space receives
2hrs direct sunlight between 9am and 3pm in
mid winter (21st June)



Enjoyment of Daylight
Refer to RFDC page 84
Assessed as apartments which have building
separation to opposing buildings >100m



Natural Cross Ventilation
Refer to RFDC page 86-87



1hr Winter Sunlight
Living room and private open space
receives 1hr direct sunlight between
9am and 3pm on 21st June





ARC AMENITY ANALYSIS LEVEL 01



8/10

Enjoyment of Views
Refer to RFDC page 50



0/10

Enjoyment of Sunlight
Refer to RFDC page 85
Living room and private open space receives
2hrs direct sunlight between 9am and 3pm in
mid winter (21st June)



7/10

Enjoyment of Daylight
Refer to RFDC page 84
Assessed as apartments which have building
separation to opposing buildings >100m



9/10

Natural Cross Ventilation
Refer to RFDC page 86-87



2/10


1hr Winter Sunlight
Living room and private open space
receives 1hr direct sunlight between
9am and 3pm on 21st June







ARC AMENITY ANALYSIS LEVEL 02

 6/8
Enjoyment of Views
Refer to RFDC page 50

 0/8
Enjoyment of Sunlight
Refer to RFDC page 85
Living room and private open space receives
2hrs direct sunlight between 9am and 3pm in
mid winter (21st June)

 5/8
Enjoyment of Daylight
Refer to RFDC page 84
Assessed as apartments which have building
separation to opposing buildings >100m

 5/8
Natural Cross Ventilation
Refer to RFDC page 86-87

 2/8
1hr Winter Sunlight
Living room and private open space
receives 1hr direct sunlight between
9am and 3pm on 21st June





ARC AMENITY ANALYSIS LEVEL 03



6/8

Enjoyment of Views
Refer to RFDC page 50



0/8

Enjoyment of Sunlight
Refer to RFDC page 85
Living room and private open space receives
2hrs direct sunlight between 9am and 3pm in
mid winter (21st June)



5/8

Enjoyment of Daylight
Refer to RFDC page 84
Assessed as apartments which have building
separation to opposing buildings >100m



5/8

Natural Cross Ventilation
Refer to RFDC page 86-87



2/8

1hr Winter Sunlight
Living room and private open space
receives 1hr direct sunlight between
9am and 3pm on 21st June





ARC AMENITY ANALYSIS LEVEL 04



6/8

Enjoyment of Views
Refer to RFDC page 50



0/8

Enjoyment of Sunlight
Refer to RFDC page 85
Living room and private open space receives
2hrs direct sunlight between 9am and 3pm in
mid winter (21st June)



5/8

Enjoyment of Daylight
Refer to RFDC page 84
Assessed as apartments which have building
separation to opposing buildings >100m



5/8

Natural Cross Ventilation
Refer to RFDC page 86-87



2/8

1hr Winter Sunlight
Living room and private open space
receives 1hr direct sunlight between
9am and 3pm on 21st June





ARC AMENITY ANALYSIS LEVEL 05



6/8

Enjoyment of Views
Refer to RFDC page 50



1/8

Enjoyment of Sunlight
Refer to RFDC page 85
Living room and private open space receives
2hrs direct sunlight between 9am and 3pm in
mid winter (21st June)



5/8

Enjoyment of Daylight
Refer to RFDC page 84
Assessed as apartments which have building
separation to opposing buildings >100m



5/8

Natural Cross Ventilation
Refer to RFDC page 86-87



2/8

1hr Winter Sunlight
Living room and private open space
receives 1hr direct sunlight between
9am and 3pm on 21st June





ARC AMENITY ANALYSIS LEVEL 06



6/8

Enjoyment of Views
Refer to RFDC page 50



1/8

Enjoyment of Sunlight
Refer to RFDC page 85
Living room and private open space receives
2hrs direct sunlight between 9am and 3pm in
mid winter (21st June)



5/8

Enjoyment of Daylight
Refer to RFDC page 84
Assessed as apartments which have building
separation to opposing buildings >100m



5/8

Natural Cross Ventilation
Refer to RFDC page 86-87



5/8

1hr Winter Sunlight
Living room and private open space
receives 1hr direct sunlight between
9am and 3pm on 21st June





ARC AMENITY ANALYSIS LEVEL 07



6/8

Enjoyment of Views
Refer to RFDC page 50



1/8

Enjoyment of Sunlight
Refer to RFDC page 85
Living room and private open space receives
2hrs direct sunlight between 9am and 3pm in
mid winter (21st June)



5/8

Enjoyment of Daylight
Refer to RFDC page 84
Assessed as apartments which have building
separation to opposing buildings >100m



5/8

Natural Cross Ventilation
Refer to RFDC page 86-87



5/8

1hr Winter Sunlight
Living room and private open space
receives 1hr direct sunlight between
9am and 3pm on 21st June





ARC AMENITY ANALYSIS LEVEL 08



6/8

Enjoyment of Views
Refer to RFDC page 50



1/8

Enjoyment of Sunlight
Refer to RFDC page 85
Living room and private open space receives
2hrs direct sunlight between 9am and 3pm in
mid winter (21st June)



5/8

Enjoyment of Daylight
Refer to RFDC page 84
Assessed as apartments which have building
separation to opposing buildings >100m



5/8

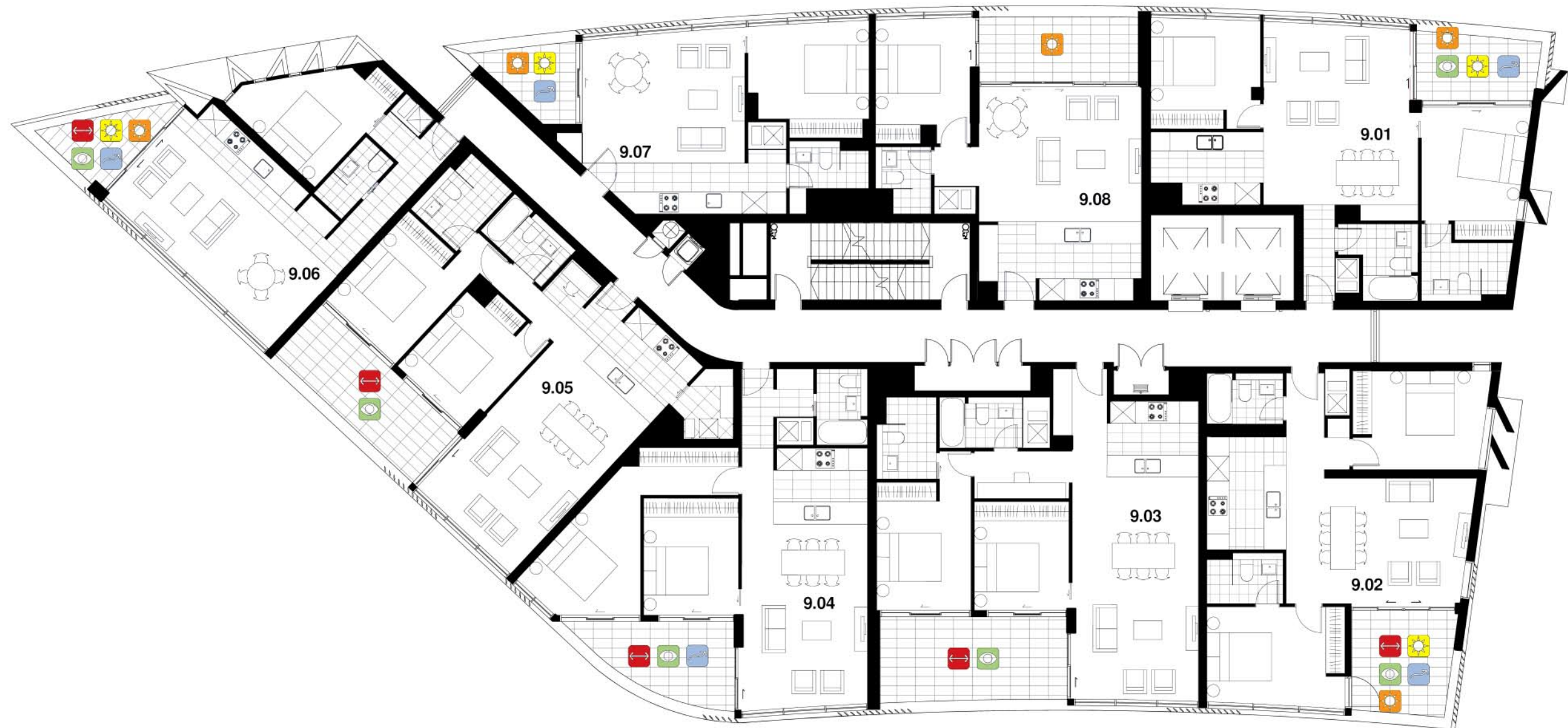
Natural Cross Ventilation
Refer to RFDC page 86-87



5/8

1hr Winter Sunlight
Living room and private open space
receives 1hr direct sunlight between
9am and 3pm on 21st June







ARC AMENITY ANALYSIS LEVEL 09

 6/8
Enjoyment of Views
Refer to RFDC page 50

 4/8
Enjoyment of Sunlight
Refer to RFDC page 85
Living room and private open space receives
2hrs direct sunlight between 9am and 3pm in
mid winter (21st June)

 5/8
Enjoyment of Daylight
Refer to RFDC page 84
Assessed as apartments which have building
separation to opposing buildings >100m

 5/8
Natural Cross Ventilation
Refer to RFDC page 86-87

 5/8
1hr Winter Sunlight
Living room and private open space
receives 1hr direct sunlight between
9am and 3pm on 21st June





ARC AMENITY ANALYSIS LEVEL 10



6/8

Enjoyment of Views
Refer to RFDC page 50



5/8

Enjoyment of Sunlight
Refer to RFDC page 85
Living room and private open space receives
2hrs direct sunlight between 9am and 3pm in
mid winter (21st June)



5/8

Enjoyment of Daylight
Refer to RFDC page 84
Assessed as apartments which have building
separation to opposing buildings >100m



5/8

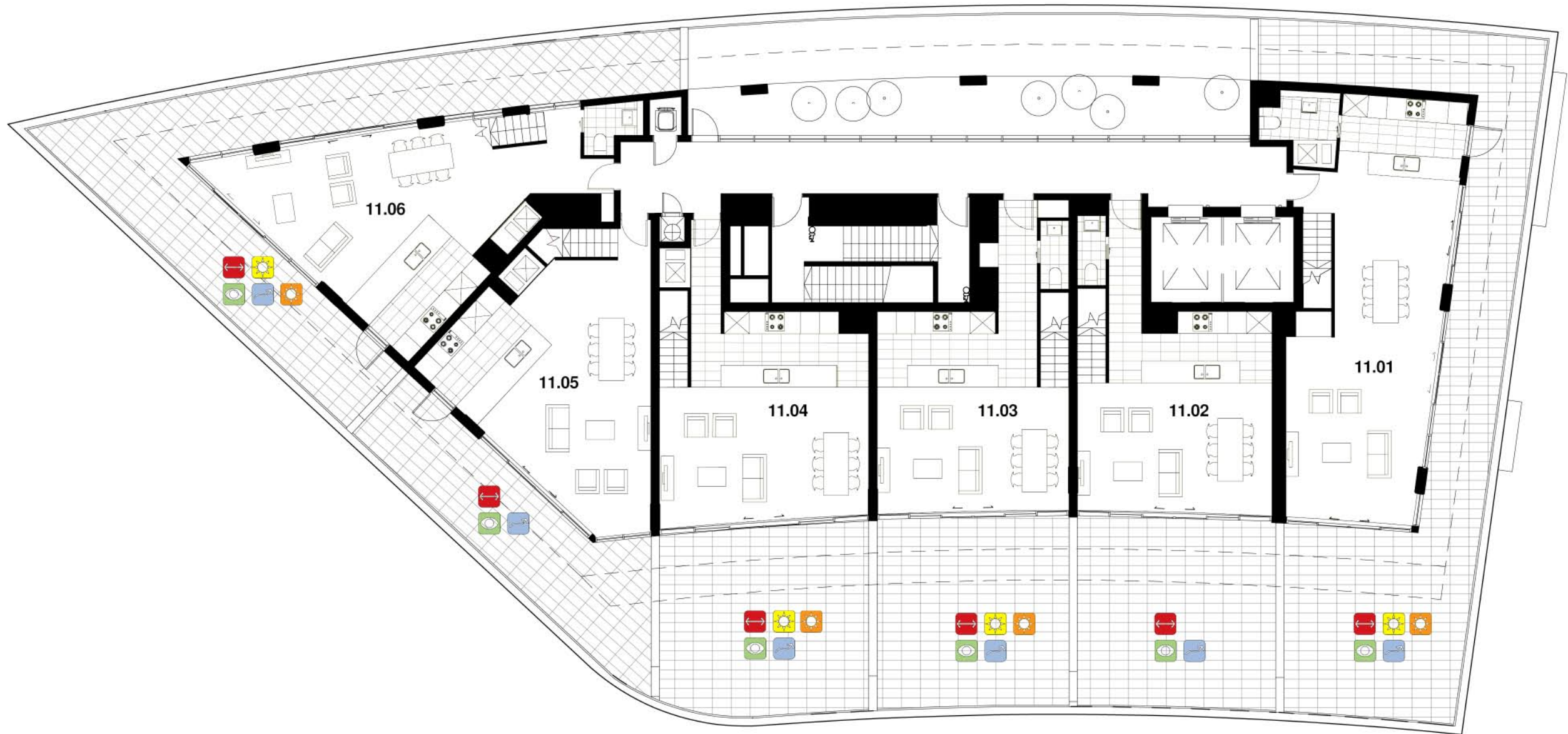
Natural Cross Ventilation
Refer to RFDC page 86-87



5/8

1hr Winter Sunlight
Living room and private open space
receives 1hr direct sunlight between
9am and 3pm on 21st June





ARC AMENITY ANALYSIS LEVEL 11



6/6

Enjoyment of Views
Refer to RFDC page 50



4/6

Enjoyment of Sunlight
Refer to RFDC page 85
Living room and private open space receives
2hrs direct sunlight between 9am and 3pm in
mid winter (21st June)



6/6

Enjoyment of Daylight
Refer to RFDC page 84
Assessed as apartments which have building
separation to opposing buildings >100m



6/6

Natural Cross Ventilation
Refer to RFDC page 86-87



4/6

1hr Winter Sunlight
Living room and private open space
receives 1hr direct sunlight between
9am and 3pm on 21st June





All apartments are duplex
Refer to Level 11 for Amenity Analysis Summary

ARC AMENITY ANALYSIS LEVEL 12



Enjoyment of Views
Refer to RFDC page 50



Enjoyment of Sunlight
Refer to RFDC page 85
Living room and private open space receives
2hrs direct sunlight between 9am and 3pm in
mid winter (21st June)



Enjoyment of Daylight
Refer to RFDC page 84
Assessed as apartments which have building
separation to opposing buildings >100m



Natural Cross Ventilation
Refer to RFDC page 86-87



1hr Winter Sunlight
Living room and private open space
receives 1hr direct sunlight between
9am and 3pm on 21st June

